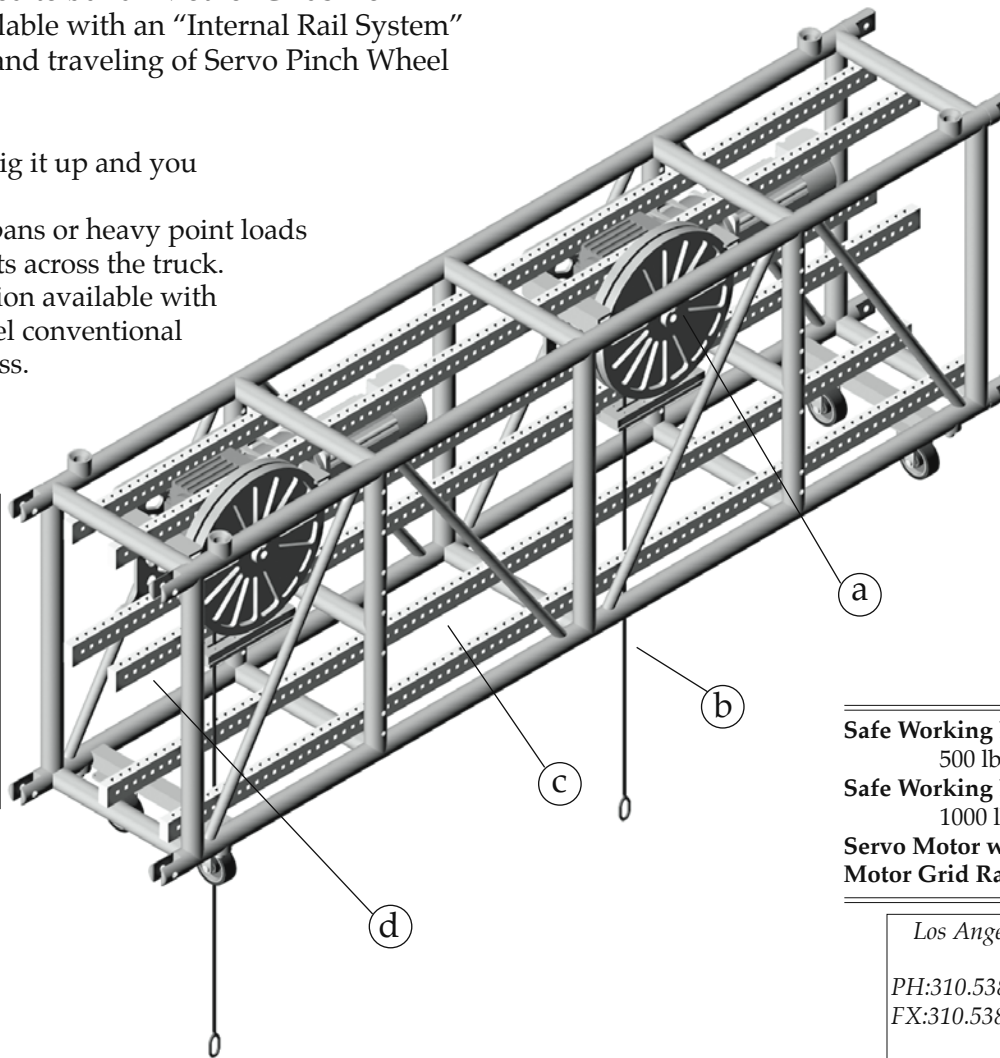


Pinch Wheel Motor Grid Rail System

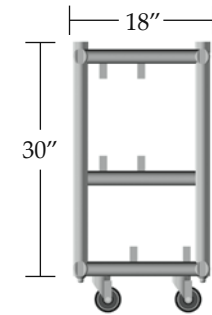
The MGT Truss System used to build "Mother Grids" for touring shows is now available with an "Internal Rail System" to facilitate the mounting and traveling of Servo Pinch Wheel Units inside the truss.

- Roll it in, pin it together, rig it up and you are ready to go
- Strong enough for long spans or heavy point loads
- Only 18" wide. Fits 5 units across the truck.
- Standard MGT Truss Section available with mounting bracket to travel conventional CM Motors inside the truss.

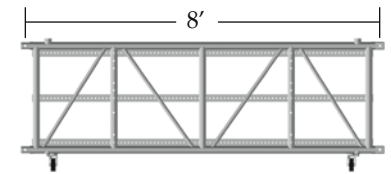
- a) Servos can be moved 1" in either direction to get the lifting point where needed.
 b) 1/4" 7 x 19 Black Steel Cable
 c) 2 Bottom Rails for mounting of Re-Directing Pulleys
 d) 4 Top Rails for mounting of Servos



End View

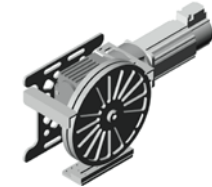


Front View



Unit Weight: 145lbs

Servo Motor w/ Pinch Wheels



Unit Weight: 175lbs

Safe Working Load of 1 Servo Motor w/ Pinch Wheels:

500 lbs with Speeds up to 400ft/min

Safe Working Load of 2 Servo Motor w/ Pinch Wheels:

1000 lbs with Speeds up to 200ft/min

Servo Motor w/ Pinch Wheel Unit Weight: 175 lbs

Motor Grid Rail Truss Unit Weight: 145 lbs

Part of the
SGPS SERVO COMPONENT SYSTEM

Los Angeles

PH:310.538.4175
FX:310.538.4180



www.sgsp.net

15823 S. Main Street
Los Angeles, CA 90248

Las Vegas

PH:702.270.4240
FX:702.270.4221

6585 Escondido St., STE G
Las Vegas, NV 89119